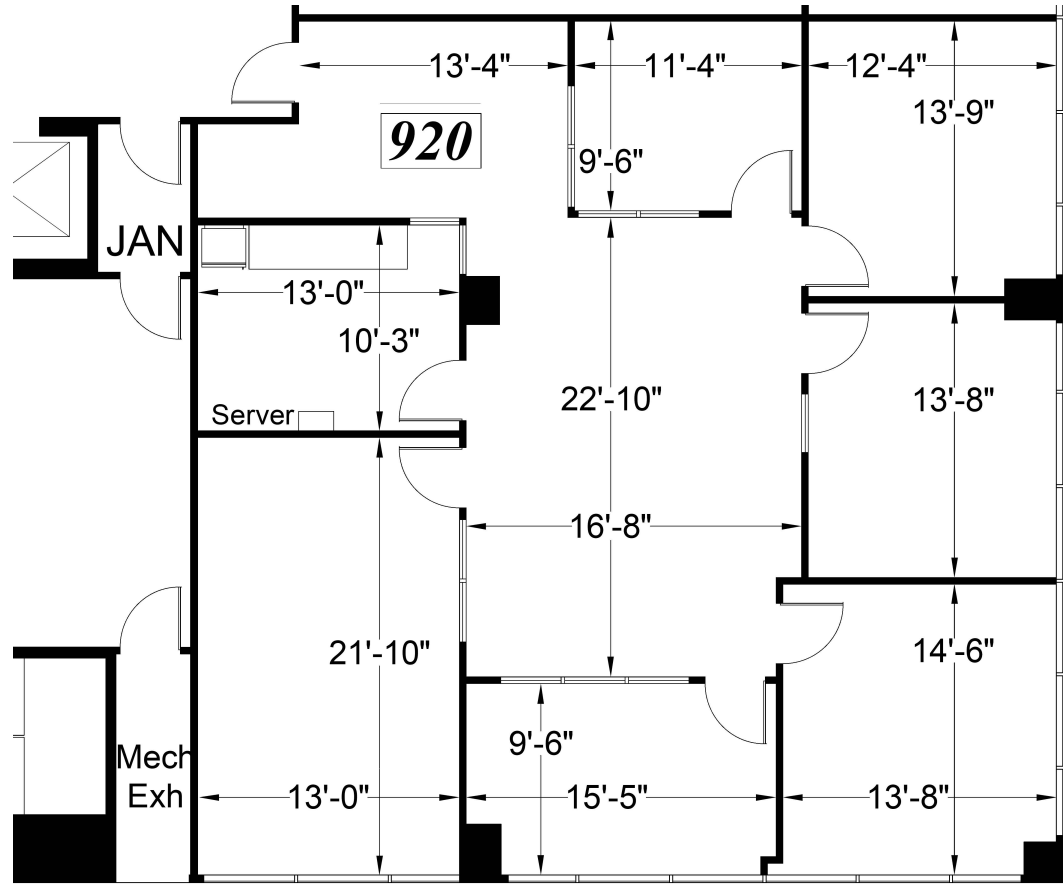
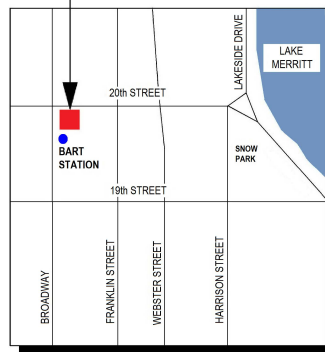


**CLASS A OFFICE SPACE FOR LEASE | GOLDEN WEST TOWER BUILDING**

1970 Broadway, Oakland, CA

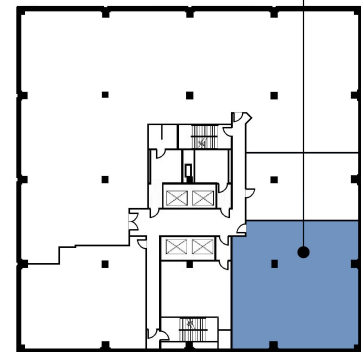


THE TOWER BUILDING  
1970 BROADWAY



SITE LOCATION MAP

FLOOR LOCATION



9TH FLOOR KEY PLAN

**AVAILABLE Sep 2020**  
**Suite 920: ±2,234 RSF**

**\$4.85 /RSF/Month, FSG**

*Plans not to scale*

**LEASING INFORMATION**

**Bob Maderious**  
Senior Vice President  
925.357.2010

bob.maderious@transwestern.com  
CA DRE LIC. 00616136

[www.1970Broadway.com](http://www.1970Broadway.com)



2175 N. California Blvd., Suite 415  
Walnut Creek, CA 94596  
CA BROKER LIC. 01263636  
T 925.357.2000  
[www.transwestern.com](http://www.transwestern.com)

The information provided herein was obtained from sources believed reliable; however, Transwestern makes no guarantees, warranties or representations as to the completeness or accuracy thereof. The presentation of this property is submitted subject to errors, omissions, change of price or conditions, prior sale or lease, or withdrawal without notice. Copyright © 2019 Transwestern.