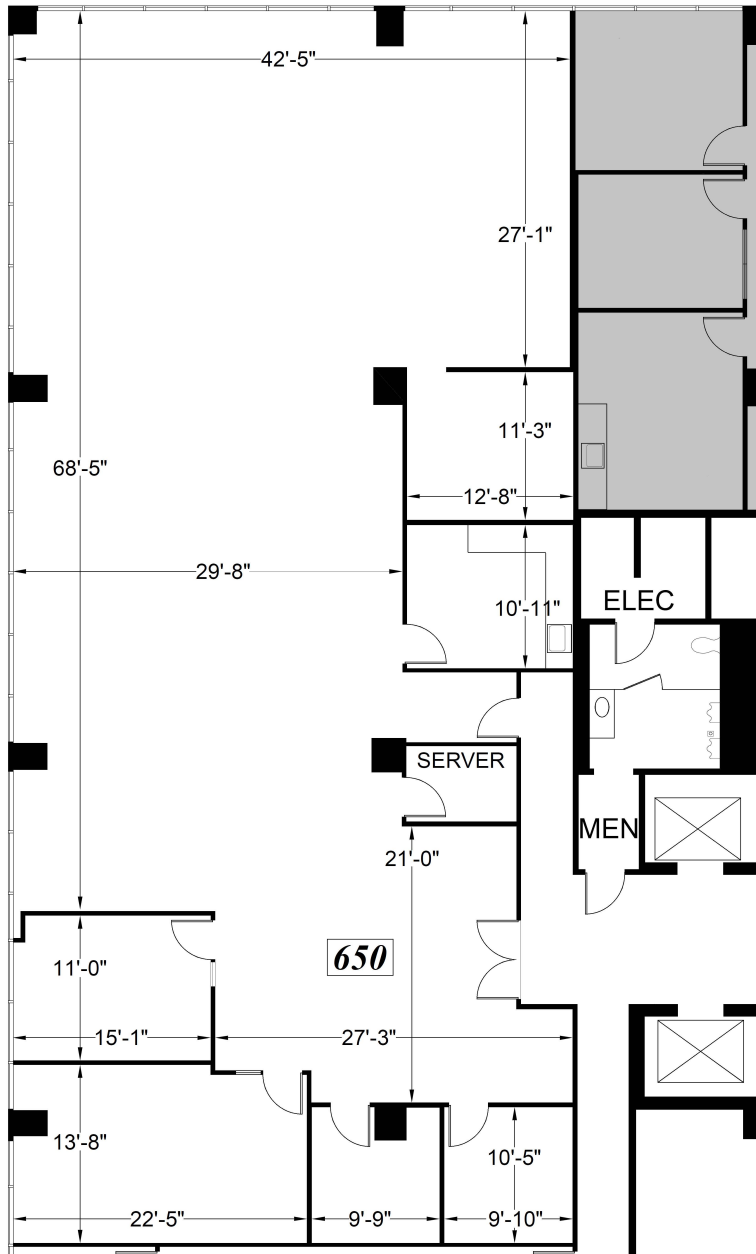


CLASS A OFFICE SPACE FOR LEASE | GOLDEN WEST TOWER BUILDING

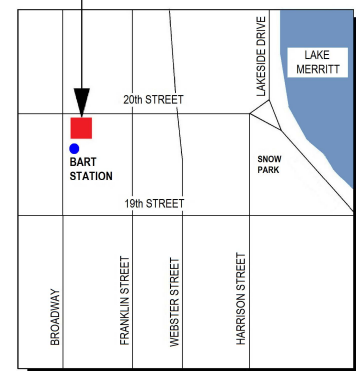
1970 Broadway, Oakland, CA



AVAILABLE Sep 2020
Suite 650: ±4,972 RSF

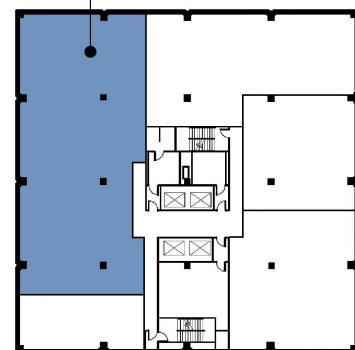
\$4.95 /RSF/Month, FSG

THE TOWER BUILDING
1970 BROADWAY



SITE LOCATION MAP

FLOOR
LOCATION



6TH FLOOR KEY PLAN

Plans not to scale

LEASING INFORMATION

Bob Maderious
Senior Vice President
925.357.2010

bob.maderious@transwestern.com
CA DRE LIC. 00616136

www.1970Broadway.com

T TRANSWESTERN®

2175 N. California Blvd., Suite 415
Walnut Creek, CA 94596
CA BROKER LIC. 01263636
T 925.357.2000
www.transwestern.com

The information provided herein was obtained from sources believed reliable; however, Transwestern makes no guarantees, warranties or representations as to the completeness or accuracy thereof. The presentation of this property is submitted subject to errors, omissions, change of price or conditions, prior sale or lease, or withdrawal without notice. Copyright © 2019 Transwestern.