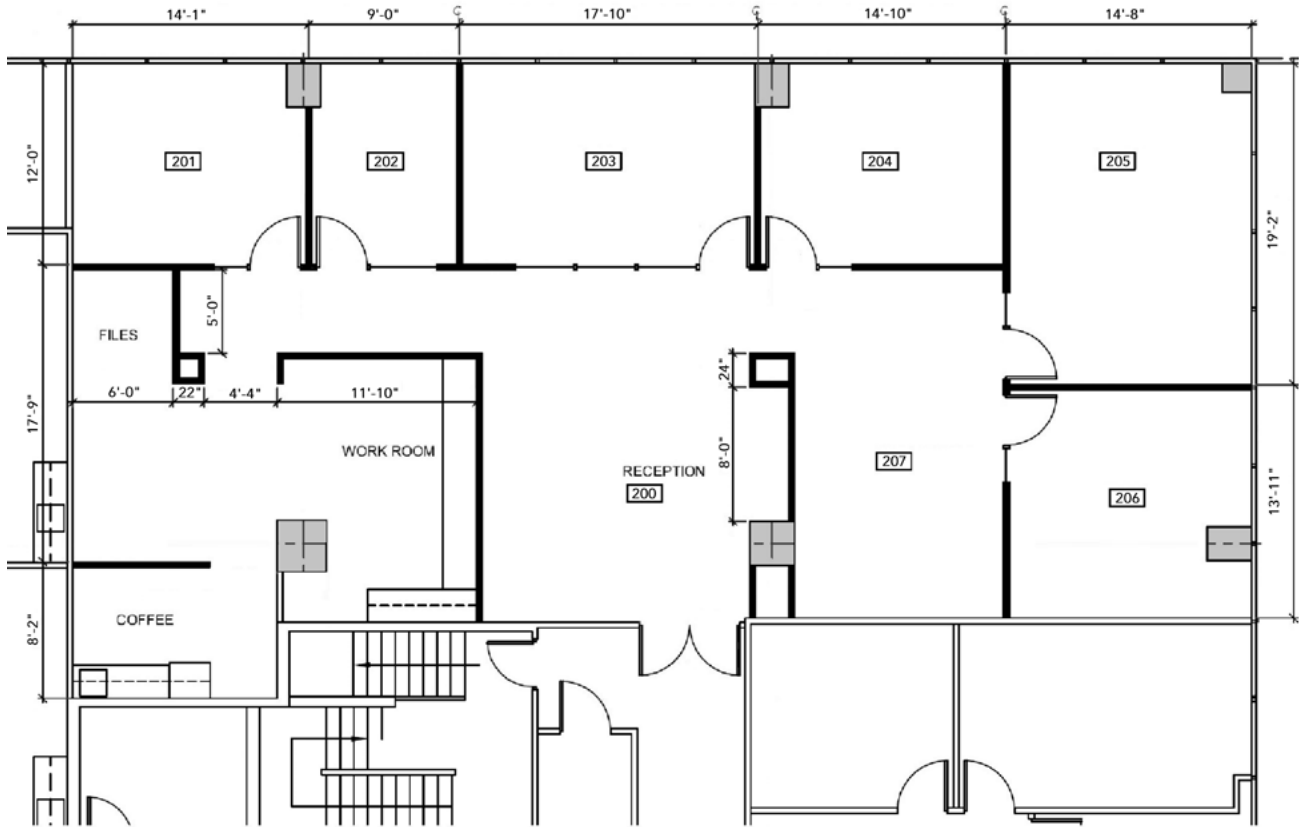


CLASS A OFFICE SPACE FOR LEASE | GOLDEN WEST TOWER BUILDING

1970 Broadway, Oakland, CA



Plans not to scale

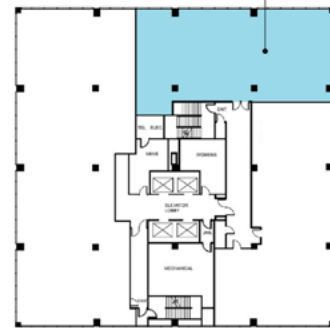
Suite 225 | ±2,995 RSF

THE TOWER BUILDING
1970 BROADWAY



SITE LOCATION MAP

FLOOR LOCATION



2ND FLOOR KEY PLAN

Available November 2018 | \$4.50 PSF

LEASING INFORMATION

Bob Maderious
Senior Vice President
925.357.2010
bob.maderious@transwestern.com
LIC 00616136

www.1970Broadway.com



500 Ygnacio Valley Road, Ste. 100
Walnut Creek, CA 94596
CA BROKERAGE LIC 01263636
T 925.357.2000 F 925.357.2001
www.transwestern.com

The information provided herein was obtained from sources believed reliable; however, Transwestern makes no guarantees, warranties or representations as to the completeness or accuracy thereof. The presentation of this property is submitted subject to errors, omissions, change of price or conditions, prior sale or lease, or withdrawal without notice. Copyright © 2018 Transwestern.