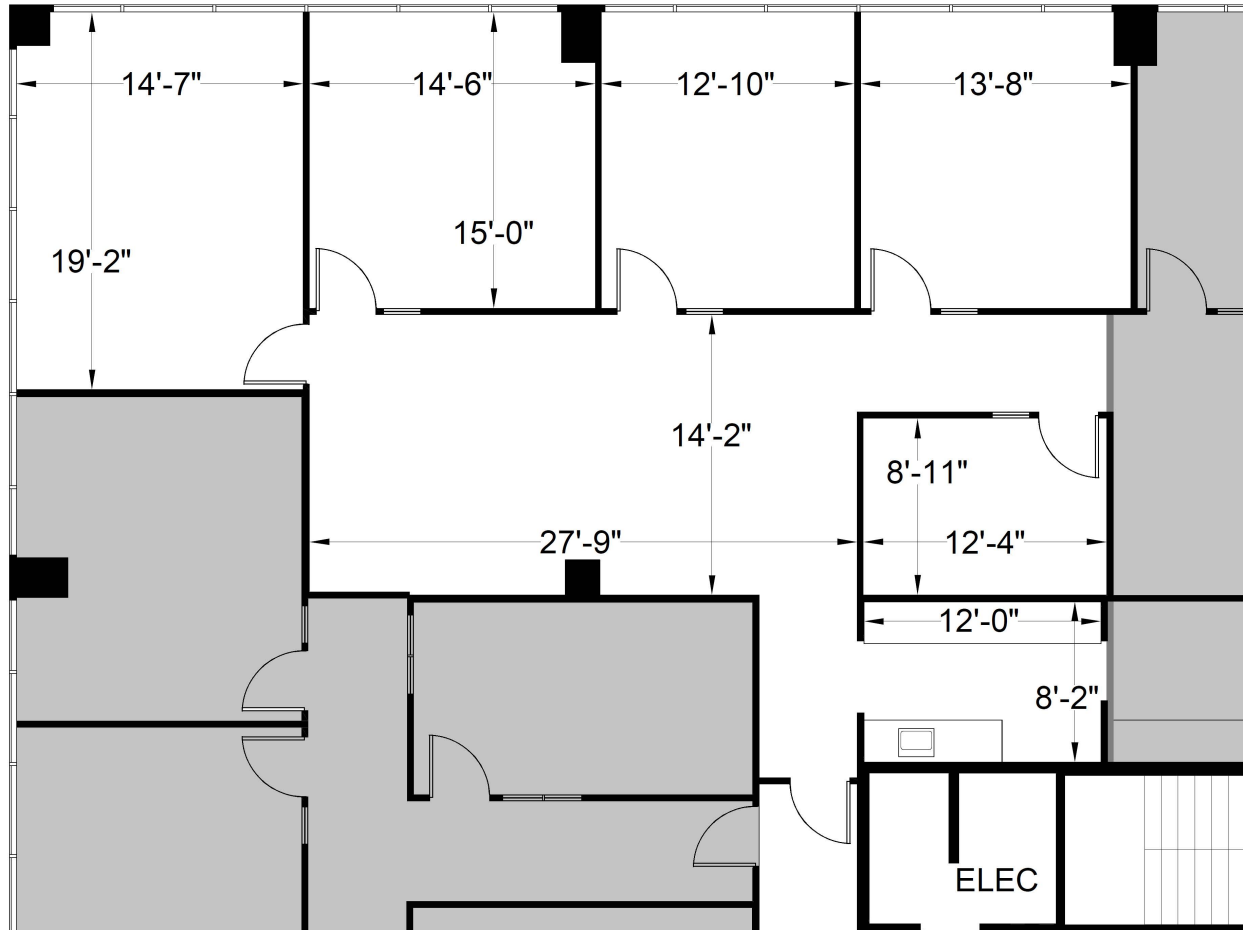
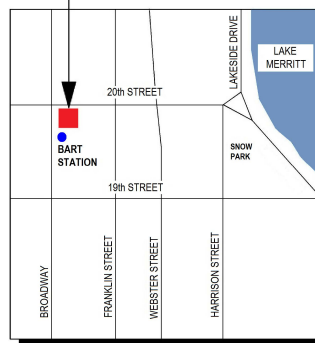


CLASS A OFFICE SPACE FOR LEASE | GOLDEN WEST TOWER BUILDING

1970 Broadway, Oakland, CA

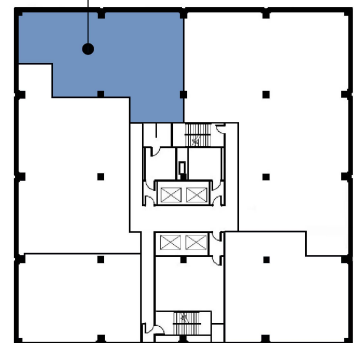


THE TOWER BUILDING
1970 BROADWAY



SITE LOCATION MAP

FLOOR
LOCATION



12TH FLOOR KEY PLAN

AVAILABLE June 2020
Suite 1270: ±2,062 RSF

\$5.15 /RSF/Month, FSG

Plans not to scale

LEASING INFORMATION

Bob Maderious

Senior Vice President
925.357.2010

bob.maderious@transwestern.com
CA DRE LIC. 00616136

www.1970Broadway.com

TRANSWESTERN®

2175 N. California Blvd., Suite 415
Walnut Creek, CA 94596
CA BROKER LIC. 01263636
T 925.357.2000
www.transwestern.com

The information provided herein was obtained from sources believed reliable; however, Transwestern makes no guarantees, warranties or representations as to the completeness or accuracy thereof. The presentation of this property is submitted subject to errors, omissions, change of price or conditions, prior sale or lease, or withdrawal without notice. Copyright © 2020 Transwestern.