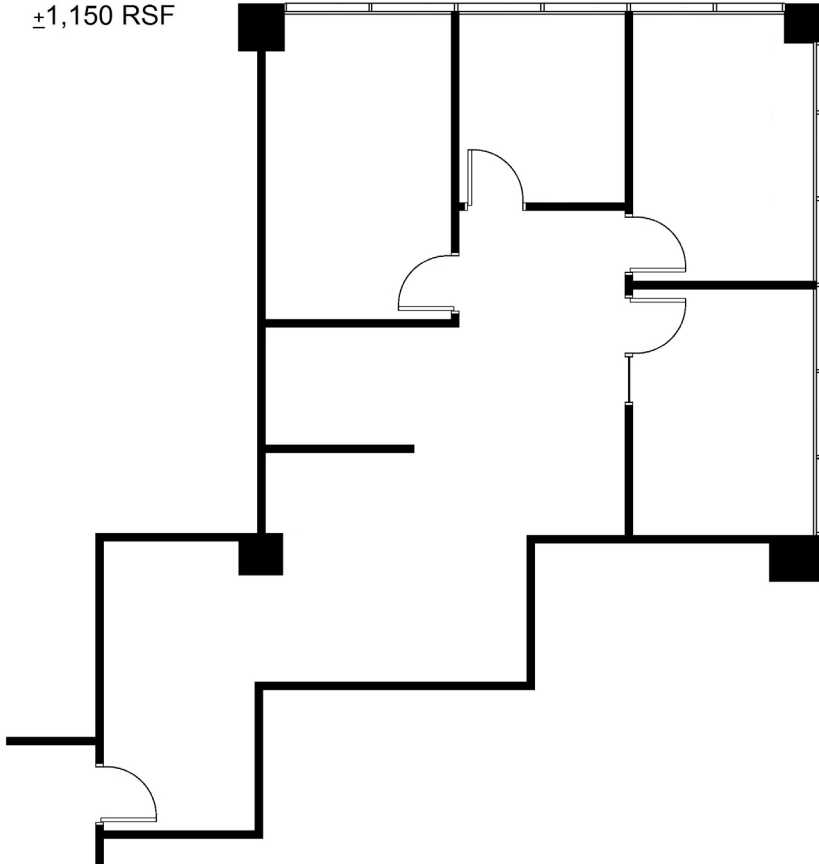


CLASS A OFFICE SPACE FOR LEASE | GOLDEN WEST TOWER BUILDING

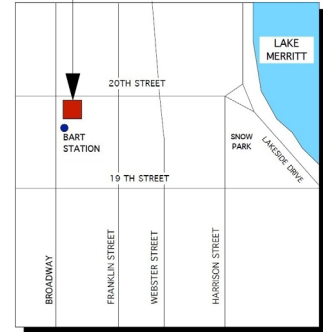
1970 Broadway, Oakland, CA

SUITE 1020

±1,150 RSF



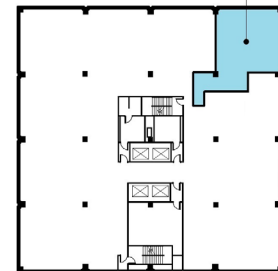
THE TOWER BUILDING
1970 BROADWAY



SITE LOCATION MAP



FLOOR
LOCATION



10TH FLOOR KEY PLAN

Suite 1020 | ±1,150 RSF

Available 02/01/2019 | \$4.45 /RSF/Month, FSG

Plans not to scale

LEASING INFORMATION

Bob Maderious
Senior Vice President
925.357.2010
bob.maderious@transwestern.com
Lic 00616136

www.1970Broadway.com



500 Ygnacio Valley Road, Ste. 100
Walnut Creek, CA 94596
CA BROKERAGE LIC 01263636
T 925.357.2000 F 925.357.2001
www.transwestern.com

The information provided herein was obtained from sources believed reliable; however, Transwestern makes no guarantees, warranties or representations as to the completeness or accuracy thereof. The presentation of this property is submitted subject to errors, omissions, change of price or conditions, prior sale or lease, or withdrawal without notice. Copyright © 2018 Transwestern.