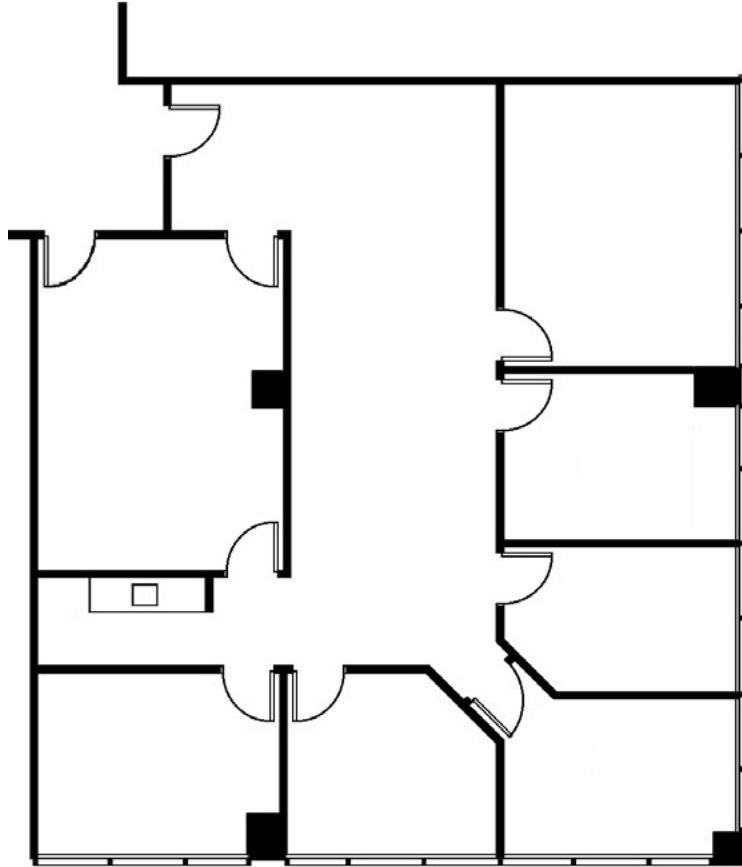


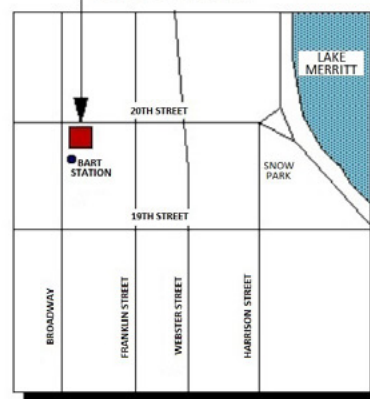
CLASS A OFFICE SPACE FOR LEASE | GOLDEN WEST TOWER BUILDING

1970 Broadway, Oakland, CA

SUITE 600
± 2,241 RSF

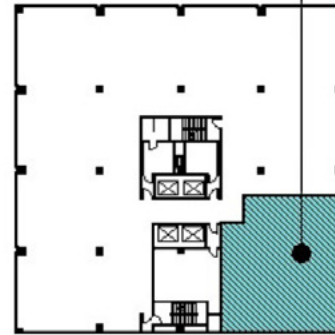


GOLDEN WEST TOWER BUILDING
1970 BROADWAY



SITE LOCATION MAP

FLOOR
LOCATION



6TH FLOOR KEY PLAN

Plans not to scale

Suite 600 | ±2,241 RSF

Available May 2018

LEASING INFORMATION

Bob Maderious
Senior Vice President
925.357.2010
bob.maderious@transwestern.com
Lic 00616136

www.1970Broadway.com



500 Ygnacio Valley Road, Ste. 100
Walnut Creek, CA 94596

CA BROKERAGE LIC 01263636
T 925.357.2000 F 925.357.2001

www.transwestern.com/walnutcreek

The information provided herein was obtained from sources believed reliable; however, Transwestern makes no guarantees, warranties or representations as to the completeness or accuracy thereof. The presentation of this property is submitted subject to errors, omissions, change of price or conditions, prior sale or lease, or withdrawal without notice. Copyright © 2015 Transwestern.